



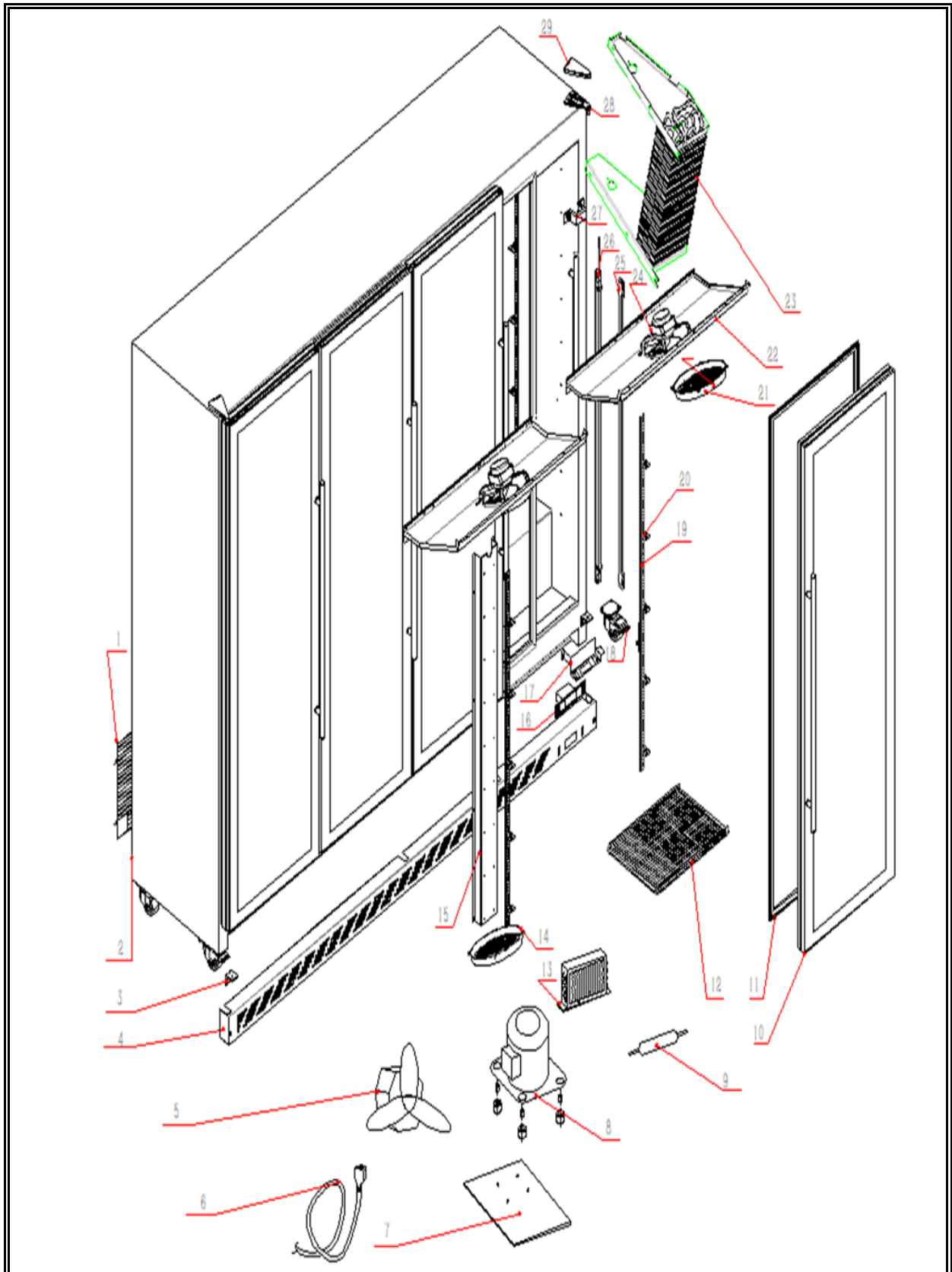
**7526.0020**

**R290**

Onderdelen informatie  
Erzatzteil information  
Spare part information  
Information de pièces







| POS: | Art.No.:       | Omschrijving:                     | Aantal: |
|------|----------------|-----------------------------------|---------|
| 01   | CS7526.0020.01 | Compressor compartment net board  | 1       |
| 02   | CS7526.0020.02 | Body                              | 1       |
| 03A  | CS9338.4410    | Bottom door hinge                 | 2       |
| 03B  | CS9338.4412    | Bottom door hinge                 | 2       |
| 04   | CS7526.0020.04 | Digital displayer plate           | 1       |
| 05   | CS9390.0128    | Condenser motor                   | 1       |
| 06   | CS7526.0020.06 | power plug                        | 1       |
| 07   | CS7526.0020.07 | Bottom plate                      | 1       |
| 08   | CS9390.2880    | Compressor                        | 2       |
| 09   | CS7526.0020.09 | Filter                            | 1       |
| 10   | CS7526.0020.10 | Door with handle                  | 2       |
| 11   | CS9338.4418    | Door seal                         | 2       |
| 12A  | CS7526.9010    | Shelf                             | 10      |
| 12B  | CS7526.9005    | Shelf                             | 10      |
| 13   | CS7526.0020.13 | Condenser                         | 2       |
| 14   | CS7526.0020.14 | Condenser fan motor net board     | 2       |
| 15   | CS7526.0020.15 | Water tube cover                  | 1       |
| 16   | CS9338.4402    | Digital displayer                 | 1       |
| 17   | CS7526.0020.17 | Digital displayer holder          | 2       |
| 18   | CS9338.1865    | Caster                            | 8       |
| 19   | CS7526.0020.19 | K strip                           | 16      |
| 20   | CS7526.9000    | K clip                            | 80      |
| 21   | CS7526.0020.21 | Evaporator fan motor net board    | 2       |
| 22   | CS7526.0020.22 | Evaporator fan motor plate        | 2       |
| 23   | CS9338.4426    | Evaporator                        | 2       |
| 24   | CS9390.0130    | Evaporator fan motor              | 2       |
| 25A  | CS9338.4406    | P tube R                          | 1       |
| 25B  | CS9338.4434    | P tube L                          | 1       |
| 26   | CS7526.0020.26 | Evaporator fan motor plate holder | 2       |
| 27   | CS7526.0020.27 | T6 tube                           | 3       |
| 28A  | CS9338.4408    | Door hinge RIGHT TOP              |         |
| 28B  | CS9338.4410    | Door hinge RIGHT BOTTOM           |         |
| 28C  | CS9338.4412    | Door hinge LEFT BOTTOM            |         |
| 28D  | CS9338.4414    | Door hinge LEFT TOP               |         |
| 29   | CS7526.0020.29 | Roof Door hinge plate             | 4       |
| A    | CS9095.0040    | Switch Red                        | 1       |
| B    | CS9393.2252    | Switch Green                      | 1       |
| C    | CS9338.4432    | Driver                            | 1       |
| D    | CS7526.9020    | Shelf portitions M                |         |
| E    | CS7526.0025    | Shelf portitions R / L            |         |